



TV XX550-XX555 Models

Dismantling Manual

About Content

This document is prepared for xx550 and xx555 cabinet products. Therefore you may encounter information about some optional components that may not exist in your product. As this is a generic manual covering all range, please ignore and skip extra/optional component information. Information already exists in user manuals is not included in this manual. Please refer to user manual of your product for basic installation, operating, maintenance and troubleshooting issues.

Before using this information and the product it supports, please read the following general information. This Dismantling Manual provides you with all technical information relating to the BASIC CONFIGURATION decided for "global" product offering. To better fit local market requirements and enhance product competitiveness, your regional office may have decided to extend the functionality of a product. These LOCALIZED FEATURES will NOT be covered in this generic guide. In such cases, please contact your regional offices or the responsible personnel/channel to provide you with further technical details.



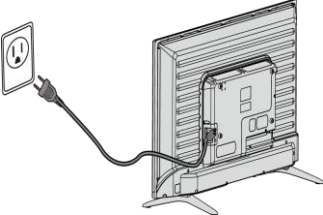

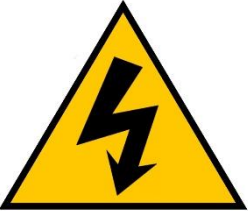

Disclaimer

The information in this guide is subject to change without notice.

Dismantling of this product shall be carried out only by well trained, experienced technicians.

Any deviation from the instructions provided or application thereof without the aforementioned expertise takes place at the user's own risk and could result in serious injury or death.

Safety Precautions

 <p>Important:</p> <p>Before starting dismantling it is important to work with the right equipment and safe tools. Product repairs must be performed by professional technicians. Any attempt to service or repair the product or products dealt with in this service information by anyone else could result in serious injury or death.</p>	 <p>Always use original spare parts. You may harm appliance, end user, environment or yourself using untested and unapproved 3rd party spare parts.</p>
 <p>Warning:</p> <p>Before any disassembly/repair operation make sure appliance is unplugged There is electrical shock and burning risk.</p>	 <p>Use right tools to prevent any wear or damage to components during assembly/disassembly.</p>
 <p>Warning:</p> <p>Please replace whole cable group even in case there is any minor failure with cables / terminals / sockets. Never try to repair nor to solder cable group. It may cause smoke, ignition and there is major risk of electrical shock.</p>	 <p>Before starting the dismantling, precautions should be taken with protective clothing against ESD risk.</p>

Tools & Equipments



ACCU SCREWDRIVER



SIDE CUTTING PLIARS



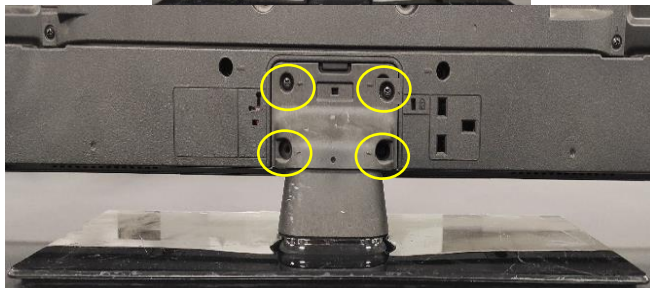
PANEL TRIM TOOL

Dismantle the TV

Step 1: Stand Removal

Stand is removed after laying TV unit down properly (over a smooth surface not to damage panel).

Stand is disassembled by removing four screws attaching it to TV unit as shown in figure.

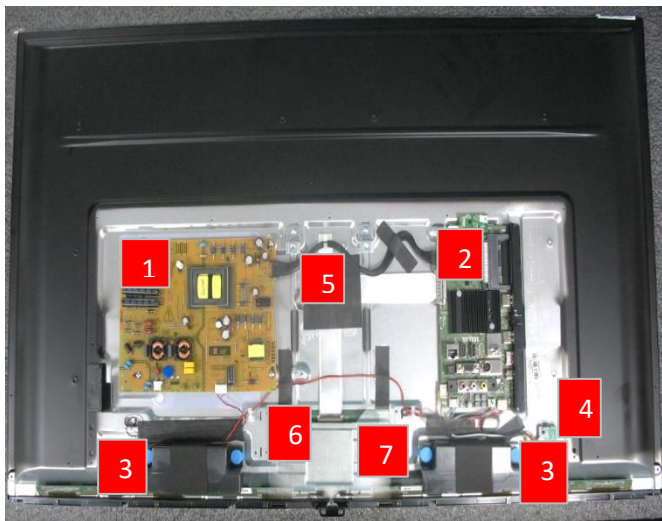




Step - 2

Step 2 :

Remove the screws (which are marked as yellow) on the TV back cover using a screwdriver.

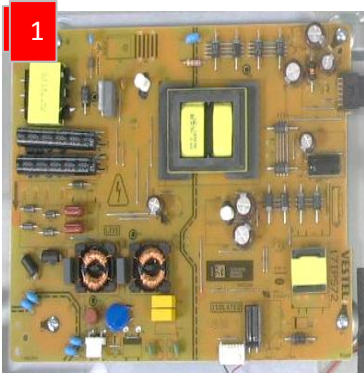


Step - 3

Step 3 :

Remove all cable connectors from electronic parts. Electronic parts must be unscrewed from the product in sequence according to the list below.

1. Power Board (Unscrew 4pcs of screw)
2. Main Board (Unscrew 4pcs of screw)
3. Speakers
4. Wi-Fi Board
5. LVDS Cable
6. Stand Metal Part (Unscrew 4pcs of screw)
7. T-Con Board (Unscrew 2pcs of screw)



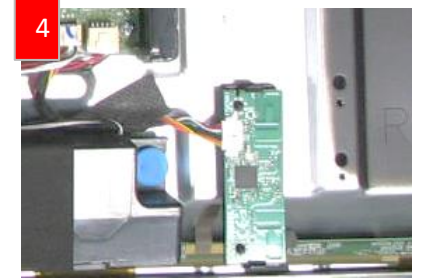
Power Board



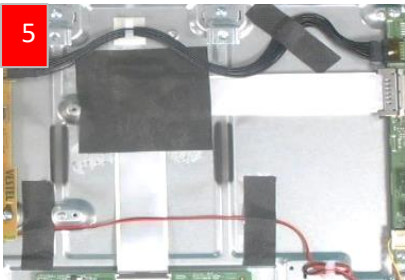
Main Board



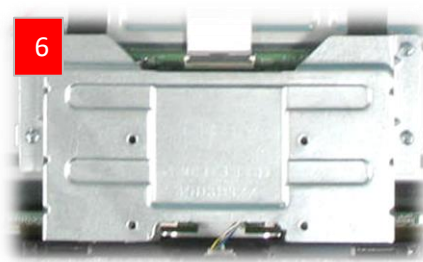
Speaker



Wi-fi Board



LVDS Cable



Stand Metal Part



T-Con Board

Dismantle TV Panel



Step - 1



Step - 2



Step - 3

Step 1 :

The TV is turned over after the electronic parts are removed.

Step 2 :

Panel cabinet should be removed from pawls by using Panel Trim Tool.

Step 3:

Cell removed from double sided tape.

Warning: Cell is fragile and can be damaged during this process. Must be protected from damages.



Step - 4

Step 4 :

Middle Frame should be removed from pawls.



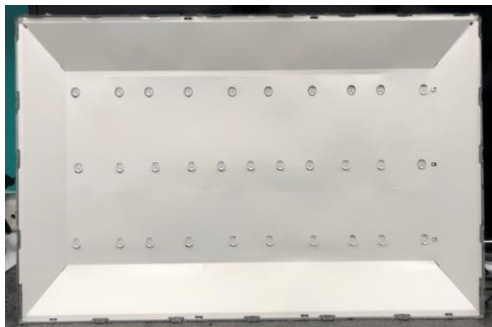
Step - 5

Step 5 :

LGP and Films are taken from the panel carefully by holding the end parts.

Step 6 :

Sheet refractor is lifted properly.



Step - 6

Dismantle Remote Control batteries



Screw is removed; then backcover and batteries can be taken out.