

设计 DESIGN	汤明枝 2015.11.6	图纸名称 PART NAME				图号/物料编码 PART NO.
校对 CO. BY		Belling BCF100 (CE-BD99-TS) 说明书				50200105C846
标准化 STANDARD						材料 MATERIAL
业务 seller	陈路	图样标记 REL	版本号 REV. NO.	重量(g) WEIGHT	比例 scale	80g双胶纸
批准 AUTHORIZE			0			美的冰箱事业部 MIDEA REFRIGERATION DIVISION
		共 页 TOTAL SHEETS		第 页 NO. OF SHEETS		

## 技术要求

- 1、尺寸：32K
- 2、印刷颜色：单色
- 3、制件必须满足QMB-J53.005 产品说明书及其它类似印刷件技术规范。
- 4、符合美的冰箱事业的最新版《QMB-GC08.007 有害物质管理规定》的限值要求。
- 5、产品需经过封样合格后方可进行批量生产。

标记 MARKER	变更内容	修改日期	签名
①			
②			
③			
④			
⑤			



**Instruction Manual**

**Chest Freezer**

**MODEL: BCF100**

## CONTENTS

### ■ Safety warnings

Meaning of safety warning symbols . . . . .	1
Electricity related warnings . . . . .	2
Related warnings for use . . . . .	2
Warnings related to placing items . . . . .	3
Warnings related to disposal . . . . .	3

### ■ Proper use of freezers

Names of components . . . . .	4
placement . . . . .	5
Start . . . . .	5

### ■ Maintenance of freezers

Cleaning . . . . .	6
Defrost . . . . .	6
Stop using . . . . .	6




### ■ Frequently asked questionst

#### DEAR CUSTOMER:

Thank you for buying this freezer. To ensure that you get the best results from your new freezer, please take time to read through the simple instructions in this booklet. Please ensure that the packing material is disposed of in accordance with the current environmental requirements. When disposing of any freezer equipment please contact your local waste disposal department for advice on safe disposal. This appliance must be only used for its intended purpose.

## Safety warnings

### Meaning of safety warning symbols

	These symbols indicate prohibited items, which should not be placed in this appliance. Non-compliance to this guideline may result in product damage, and the personal safety of the user, and may nullify your warranty.
Prohibition symbols	
	These symbols indicate instructions on the correct use of the appliance. Non-compliance to this guideline may result in product damage, and the personal safety of the user, and may nullify your warranty.
Warning symbols	
	These symbols indicate items of importance, and to which careful attention should be paid. Non-compliance to this guideline may result in product damage, and the personal safety of the user, and may nullify your warranty.
Note symbols	

#### CAUTION :

The appliance is not intended for use by young children or infirm persons without supervision.

Young children should be supervised to ensure that they do not play with the appliance.

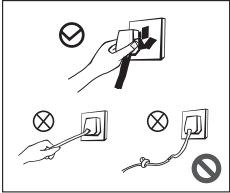
#### GENERAL:

This appliance is designed for domestic use only. It enjoys the advantages of small size, is lightweight, low power consumption and is easy to use.

This manual contains lots of important safety information which shall be observed by the users.

## Safety warnings

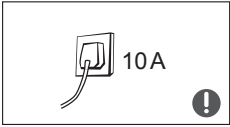
### ► Electricity related warnings



- When un-plugging the unit, do not pull the power cord. Firmly grasp the plug top and pull it directly from the socket.

- Do not use if the power cord or plug is damaged in any way.

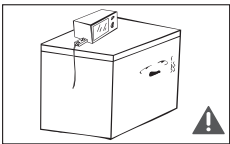
- Worn or damaged power cords should be replaced by the authorized service centre.



- The unit should be plugged into a 13amp power socket and is not used with an extension lead or any other adaptor. The socket in use must be earthed.

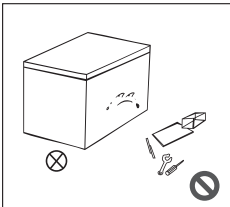


- This appliance is designed for use with a power supply of 220~240v / 50Hz and should not be used with other types of power supply.



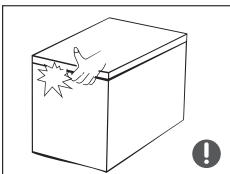
- To ensure safety it is not recommended that any other appliances are stored on top of the appliance.

### ► Related warnings for use.



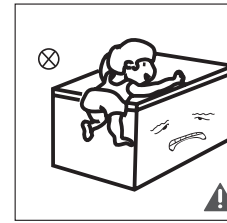
- Unauthorised repair or tampering with the appliance will nullify the warranty. Any repairs should be carried out by the authorised service centre.

- The area around the appliance should be kept clear with respect to the sides and minimum required ventilation. Please see page 5 for minimum requirements.



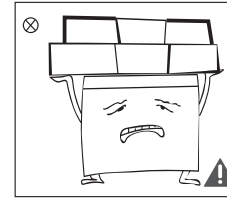
- The gaps between the freezer door and the main body of the unit are quite small so please do not put your hand in these areas to avoid compression injuries.

## Safety warnings



- Do not allow children to climb on, or into the freezer to prevent them becoming trapped inside, or injured.

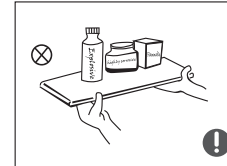
- Do not spray or wash the freezer or allow to be used in an area where it will be exposed to water splashes or moisture, as this could affect its electrical safety.



- To avoid injury, do not place heavy objects on top of the freezer, as they may fall when the door is opened and cause injury.

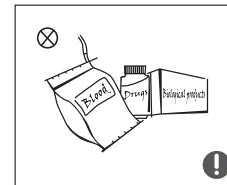
- Please unplug the freezer during a power cut or during cleaning. When the unit has been unplugged, please wait 5 minutes before plugging back in. This is to avoid damage to the compressor.

### ► Warnings related to placing items

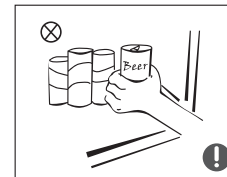


- To ensure personal safety, do not put flammable, explosive, volatile or corrosive materials in the freezer.

- Do not place flammable materials near the freezer.



- This freezer is designed for household use and is only suitable for storing food. It should not be used for the purposes of storing blood, drugs or other biological products.



- Do not use the freezer to store sealed bottles or containers e.g. bottles / cans of beer or beverages.

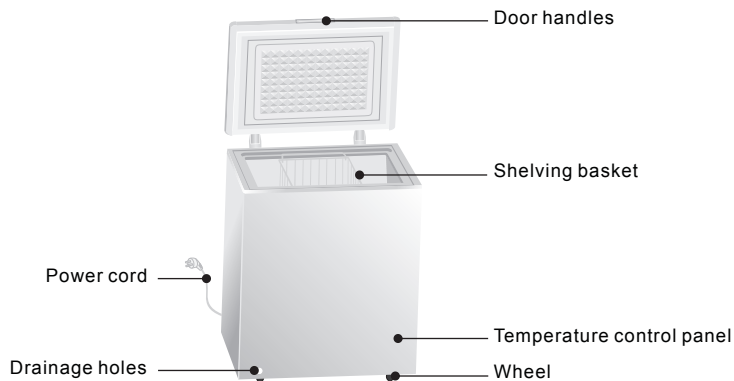
### ► Warnings related to disposal

The freezer's R600a refrigerant and cyclopentane foam materials are combustible materials and discarded refrigerators should be isolated from fire sources and can not be burned. Please transfer the freezer to qualified professional recycling companies for processing to avoid damages to the environment or other hazards.

Please remove the door of the freezer and shelves which shall be properly placed to avoid accidents of children entering and playing in the freezer.

## Proper Use of freezers

### ► Names of components



- The low temperature of freezer may keep food fresh for a long time and it is mainly used to store frozen foods and making ice.
- The freezer is suitable for storage of meat, fish, shrimp, dumplings, rice balls and other foods not to be consumed in short term.
- Chunks of meat are preferably to be divided into small pieces for easy access. Please be noted food shall be consumed within the shelf time.

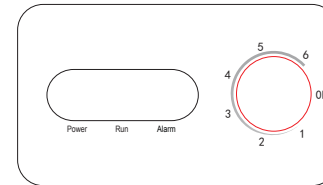
The features and accessories of the freezer you bought may be not entirely consistent with the legend, please refer to the packing list.

### ► Product features

- **Reliable properties:** the refrigerator adopts branded efficient compressor which has excellent performance and high reliability;
- Foam door structure;
- Built-in mosaic door seals for dustproof which is easy to remove and clean;
- R600a environmentally friendly refrigerant and cyclopentane environmentally friendly blowing agents are used to promote environmental protection.

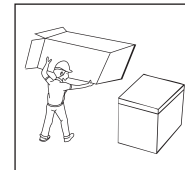
## Proper Use of freezers

### ► Temperature Control

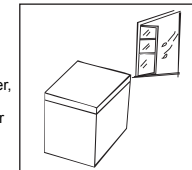


- Connect the freezer to power supply and “Power” indicator will shine. “Run” indicator will shine in operation. “Alarm” indicator will shine when the the temperature inside the chamber is too high.
- The temperature of the chamber is adjusted through the thermostat knob. The number “1, 2, 3, 4, 5, 6,” do not mean a specific temperatures, the lower the number is, the higher the temperature inside will be and Vice Versa.
- When the thermostat knob is turned to “Off” the freezer will not operate

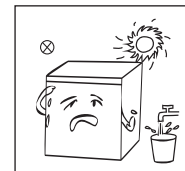
### ► Placement



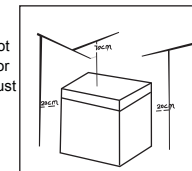
- Before using the freezer, remove all packaging materials including bottom cushions and foam pads and tapes inside the freezer, tear off the protective film on the door and the freezer body.



- The freezer is placed in a well-ventilated indoor place; the ground shall be flat, and sturdy .

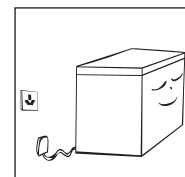


- Keep away from heat and avoid direct sunlight. Do not place the freezer in moist or watery places to prevent rust or reduction of insulating effect.



- The top space of the freezer shall be greater than 70cm, and the distances from both sides and backside shall be more than 20cm to facilitate the opening and closing and heat dissipation.
- Wipe the freezer inside and outside with warm moist rag (add a small amount of detergent in the warm water and wipe clean finally with clean water).

### ► Start



- The freezer should be left to stand for half an hour before plugging in for the first time.
- The freezer should be allowed to run for 2 to 3 hours before loading fresh or frozen foods. The freezer should be allowed to run for more than 4 hours continuously in summer before placing fresh or frozen food as the ambient temperature will be higher.

## Maintenance of freezers

### ► Cleaning

- Dusts behind the freezer and on the ground shall be timely cleaned to improve the cooling effect and energy saving. The interior of the freezer should be cleaned regularly to avoid odor. Soft towels or sponge dipped in water and non-corrosive neutral detergents are suggested for cleaning. The freezer of shall be finally cleaned with clean water and dry cloth. Open the door for natural drying before the power is turned on.



- Do not use hard brushes, clean steel balls, wire brushes, abrasives, such as toothpastes, organic solvents (such as alcohol, acetone, banana oil, etc.), boiling water, acid or alkaline items clean refrigerator considering that this may damage the fridge surface and interior.
- Do not rinse with water so as not to affect the electrical insulation properties. Please use a dry cloth when cleaning temperature control knob and electrical components.

⚠ Please unplug the freezer for defrost and cleaning.

### ► Defrost

- Freezer shall be manually defrosted.  
Unplug the freezer and open the freezer door, remove foods and drawers before defrosting; Open the outflow holes and drainage holes (and place water container at the outflow holes); indoor frost will naturally melt, wipe the defrost water with a dry, soft cloth. When the frost softens, an ice scraper might be used to the accelerate de-icing process.
- Please remove the food and put in a cool place when defrosting before removing accessories.

Other mechanical devices or other means shall not be used to accelerate except those recommended by the manufacturer. Do not damage the refrigerant circuit.

### ► Stop using

Foods can be preserved for a couple of hours even in summer in case of power failure; it is recommended to reduce the frequency of opening door and do not put fresh foods into the freezer.  
Please unplug the freezer left unused for a long time for cleaning. Keep the door open to avoid the bad odor.  
Do not turn upside, horizontally place or vibrate the refrigerator, the carrying angle can not be greater than 45°. Please hold the door and hinge when moving.

⚠ Continuous operation is recommended when the freezer is started. Please do not move the freezer under normal circumstances so as not to affect the freezer's service life.

## Frequently asked questions

- The following simple issues can be handled by the user. Please call the after-sale service department if the issues are not settled.

Inoperation	Whether the freezer is plugged and connected to power; Low voltage; Whether temperature control knob is in the work area Failure power or tripping circuit
Odor	Odorous foods should closely wrapped; Whether foods are rotten; Whether the interior shall be cleaned.
Long-term operation of compressor	It is normal that freezer operates for longer time in summer when the ambient temperature is higher; Do not put too much food in the freezer at one time; Do not put foods until they are cooled; Frequent opening of freezer door. Thick frost layer (defrost is needed)
Illuminating light does not shine	Whether the freezer is connected to power, whether the indicator light is damaged.
The freezer door can not be properly closed.	The freezer door is stuck by food packages; Too much food; Tilt freezer.
Loud noises	Whether the food is leveled, whether the freezer is balanced; Whether the freezer parts are properly placed.
Transient difficulty in door opening	After refrigeration, there will be pressure difference between the inside and outside of the refrigerator to result in transient difficulty in door opening. This is a normal physical phenomenon.

#### Warm tips:

- ◆ The freezer enclosure may emit heat during operation specially in summer, this is caused by the radiation of the condenser, and it is a normal phenomenon.
- ◆ Condensation: condensation phenomenon will be detected on the exterior surface and door seals of the freezer when the ambient humidity is large, this is a normal phenomenon, and the condensation can be wiped away with a dry towel.
- ◆ Airflow sound: Refrigerants circulating in the refrigerant lines will produce eruption of sound and grunts which is normal does not affect the cooling effect.
- ◆ Buzz: Buzz will be generated by running compressor specially when starting up or shutting down.
- ◆ Clatter: The solenoid valve or electric switch valve will clatter which is a normal phenomenon and does not affect the operation.